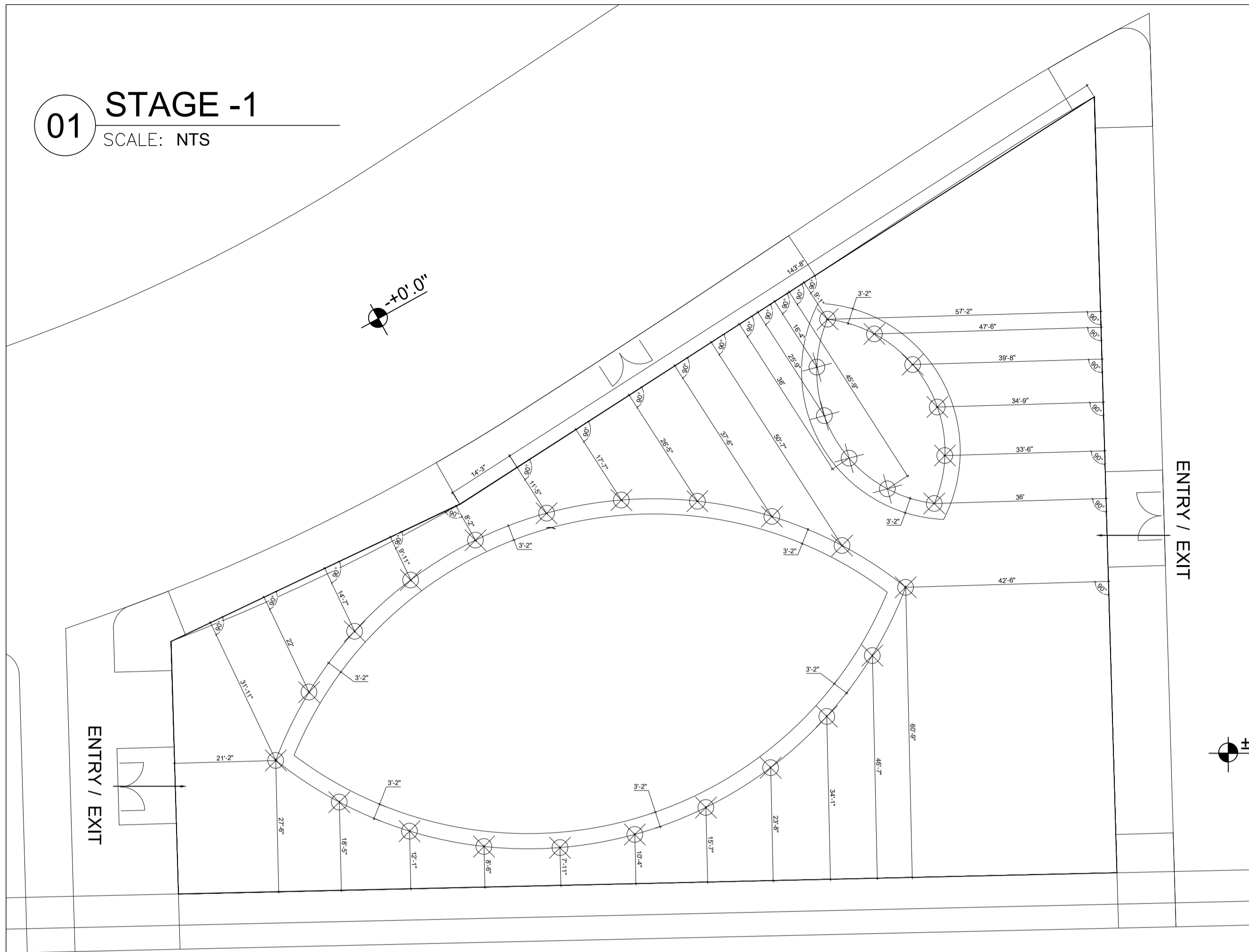


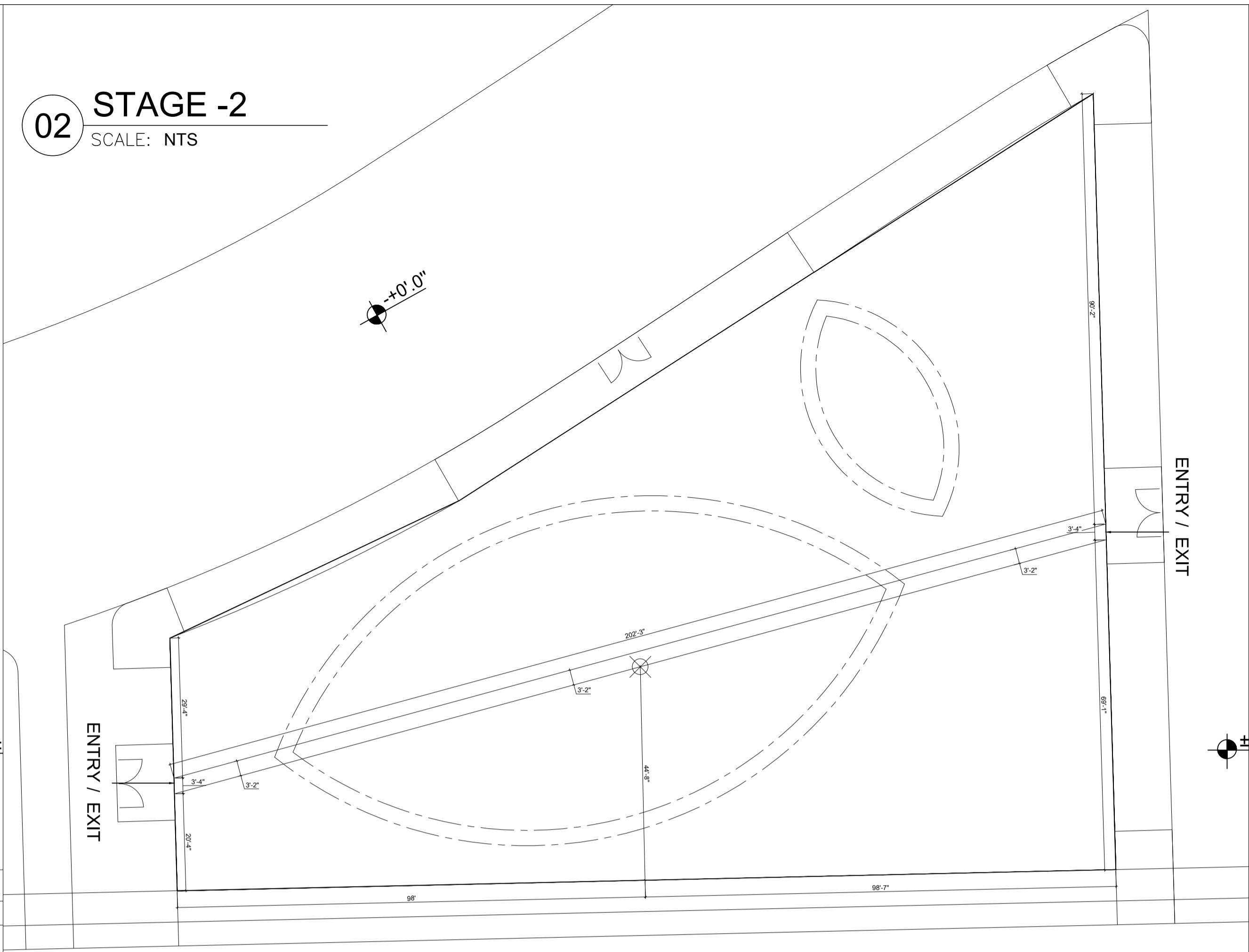
01 STAGE -1

SCALE: NTS



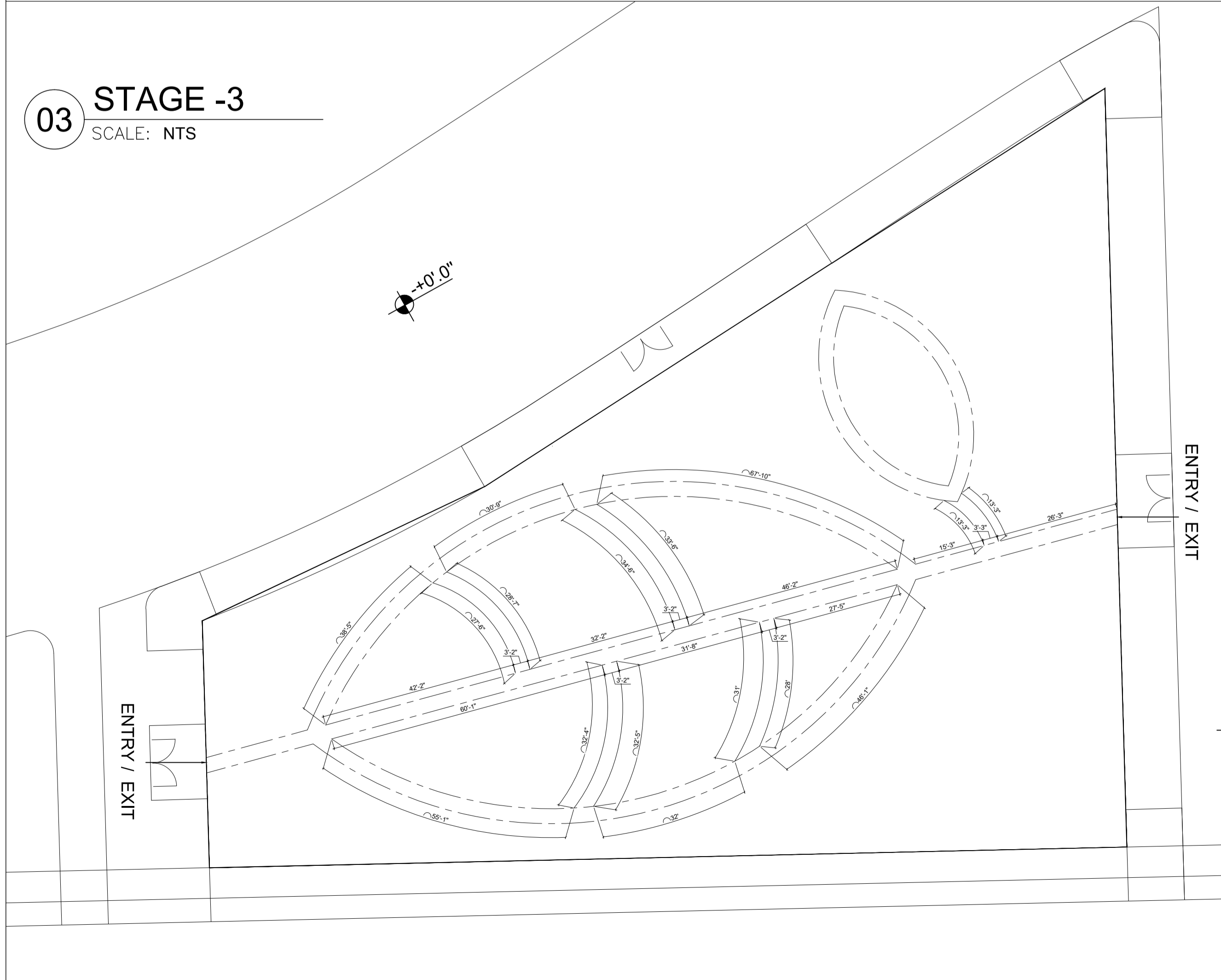
02 STAGE -2

SCALE: NTS



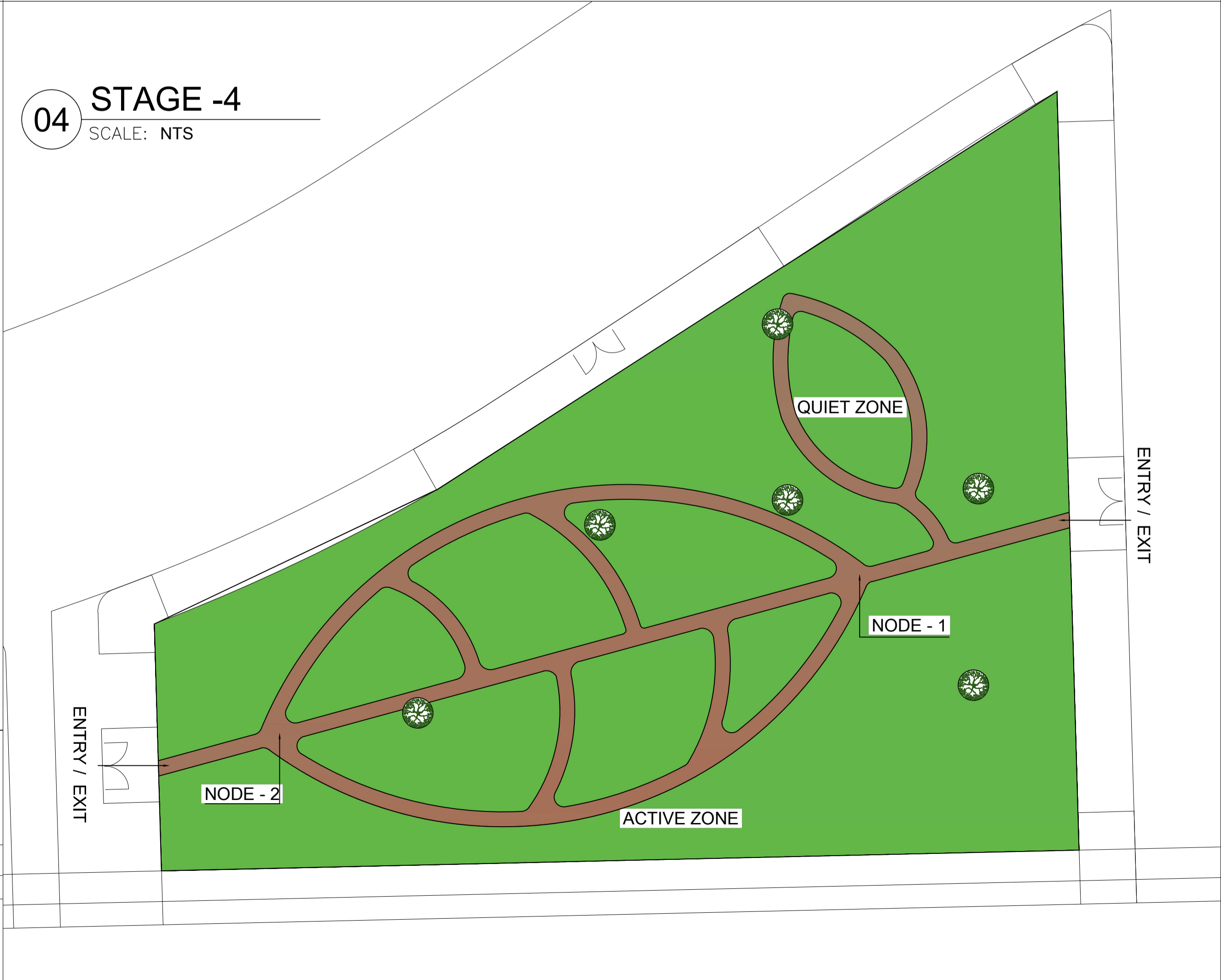
03 STAGE -3

SCALE: NTS



04 STAGE -4

SCALE: NTS



NOTES:

TOTAL PLOT AREA - 1905 SQMTRS / 20512 SQFT

ALL PATHWAYS TO HAVE A UNIFORM WIDTH OF 1 METER

CIRCLE OF 2 METER DIA IS LEFT AROUND EXISTING MANGO TREES

2 METER DISTANCE IS LEFT AGAINST THE SIMBAL TREE BOUNDARY WALL

TITLE : SITE MARKING DRAWING		
LAHORE PROJECT		
PROJECT NO:	DWG NO:	REV:
SCALE:	DRAWN BY:	0
DATE: 30/06/2017	CHKD BY:	